

Thank you for choosing X-IT to serve your safety needs. Blessings & Be Safe, Aldo / X-IT Inventor

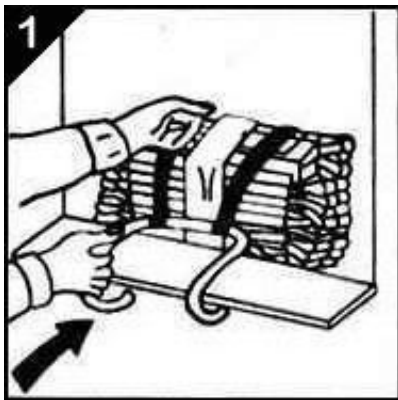
SAFE PRACTICE VIDEOS:

[Safe Practice Video from 1st Floor Window](#)

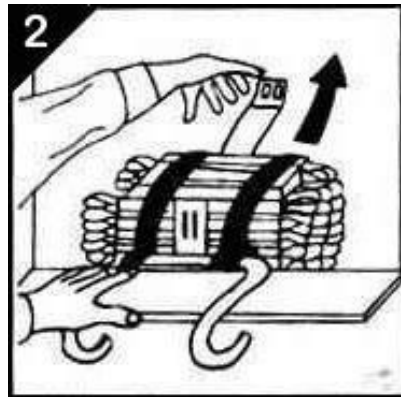
[Safe Practice Video from Intended Window](#)

**⚠ DANGER FAILURE TO READ AND FOLLOW ALL INSTRUCTIONS
WILL CAUSE SERIOUS INJURY OR DEATH**

INSTRUCTION VIDEO: www.X-itProducts.com



HOOK to window sill.

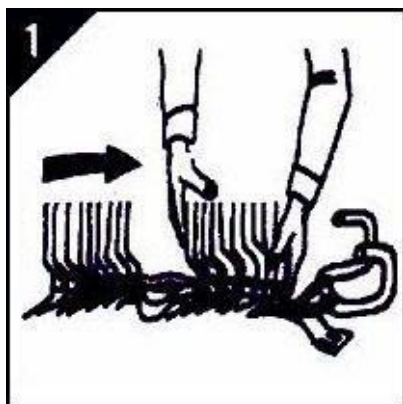


DROP

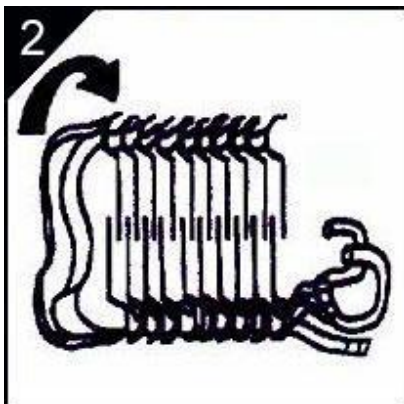
1. Your X-IT Ladder is not a toy and should not be used by children without instruction and supervision. Your X-IT Ladder is intended to be used in emergency situations only and as a last resort means of escape when life is at risk, all other escape options are exhausted, and waiting for help is not possible. Do not use for other purposes or whenever another exit or means of escape exists.
2. You must ensure your X-IT Ladder will work safely in your application before it is needed in an emergency. You must ensure whoever may need to use your X-IT Ladder is properly trained. You must follow good safety practices, applicable codes and regulations at all times. Your X-IT Ladder is intended to supplement, not replace the important fire protection principles of fire drills, escape plans, smoke and fire detectors, fire extinguishers, etc.
3. We advise safe practice with your X-IT Ladder before it is needed in an emergency. Study all instructions and how your X-IT Ladder is packed. Deploy your X-IT Ladder from the intended window and climb up a step from the ground. A second method is to deploy your X-IT Ladder from a first floor window not more than 6 feet off the ground then climb out the window and down to the ground. Caution - this may scratch your house. Re-pack your X-IT Ladder as it was originally packed.
4. Your X-IT Ladder is designed to work on all window sills that allow your X-IT Ladder to attach securely to the wall structure under the window sill.

5. Your X-IT Ladder is rated for #333 lbs and is designed for use by one person at a time. You must confirm your window will hold the weight you intend to put on your X-IT Ladder. We test the X-IT Ladder to #1,000 lbs – do not apply a total load above the #333 lb rated load.
6. Deploying any emergency ladder above a first floor window may cause damage to the first floor window and injury to the user. Do not deploy any emergency ladder into flames, extreme heat or smoke.
7. Close doors before opening windows to avoid intensifying a fire. Stay away from outside obstructions like wires, cables, fences, etc. that may cause serious injury or death.
8. Your X-IT Ladder should get you to within 2' of the ground for safe escape.
9. When climbing down keep your body close to your X-IT Ladder. Trying to carry anything (children, pets, objects, etc.) while using any emergency ladder may cause you to fall off and cause serious injury or death. Consider purchasing an X-IT Baby/Pet Escape Bag.
10. Inspect your X-IT Ladder annually for damage, loosening and deterioration. Your X-IT Ladder should be replaced every 15 years to ensure safety. Store your X-IT Ladder in a convenient location near the exit window. Do not store your X-IT Ladder in direct sunlight, outside, or at extreme temperature. To clean rinse with water only.

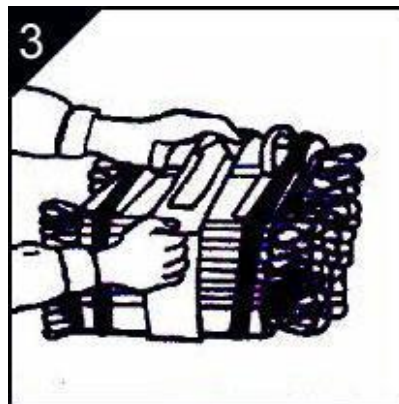
REPACK INSTRUCTION VIDEO: www.X-itProducts.com



Stand-offs facing up, fold webbing between rungs.



3 Story only - fold, to mesh stand-offs together.



Secure strap with Velcro.

⚠ DANGER FAILURE TO READ AND FOLLOW ALL INSTRUCTIONS WILL CAUSE SERIOUS INJURY OR DEATH

Replacement & Warranty

1. If you use your X-IT Ladder in a documented emergency please contact X-IT to have your Ladder replaced free.
2. Your X-IT Ladder is covered by a 10 Year Limited Warranty. The warranty covers material and workmanship and is limited to the original purchaser. X-IT makes no other warranties, express or implied. The warranty does not apply for product that was subject to misuse, accident, alteration or was used or maintained improperly. X-IT is not liable for indirect, incidental, consequential or special damages. Proof of original purchase required for any claim. You should understand your state's rights.